



**St Mark's Church Community Centre**

**Calder Rise**

**Bedford. MK41 7UY**





## **This presentation will**

1. Describe St Mark's Church Community Centre
2. Answer the questions from Wren regarding
  - a) The need for our project
  - b) Whether our project delivers value for money
  - c) Consideration of the environmental value of the project
  - d) Describe why our project is special
3. It will identify our costs
4. Provide some drawings of the building project





## Our Need

**St Mark's have been seeking grants from fundraising bodies for this project for over two years. We have found grant making bodies increasingly stretched financially.**

**We desperately need the grant from WREN to make our project, and the vision which we have for our community, happen.**

*Printed on sustainable paper*





## Introduction

# St Mark's Church Community Centre

### The Good News!

St Mark's is only used as a church for two hours a week. For the rest of the time it is a resource offered to all the community without discrimination.

The Centre is open seven days a week and we currently have 46 community groups and charities based at the Centre. We are busiest community Centre in Bedfordshire. We have 130 volunteers working each week.

*Printed on sustainable paper*





## Introduction

# St Mark's Church Community Centre

### The Good News!

#### Existing users include

Local Health Authority – Clinics, doctors surgeries

Clubhouse – European Social Funded project for learning disabilities

Bedfordshire Police – Used as a local police station

Parish Council – Used for surgeries and meetings

Pre-school – Fifty children attend daily

Numerous youth groups, recreational and social activities.

*Printed on sustainable paper*





## Introduction

# St Mark's Church Community Centre

### The Good News! Existing users include:-

Autism Bedfordshire Society, Autism Link Group, Adult Chess Club, Arts Society, Bridge Club (Wednesday), Bridge (Saturday), Bridge(Thursday), Bunyan Bridge, 1<sup>st</sup> Brownies, 2<sup>nd</sup> Brownies, Card Making, Gardening group, Churchyards, Clubhouse, Day Centre, Happy Dog, Dog Training, Embroiderers Guild, Fledgelings, Flower Arranging Group, Guides, Health Authority Clinic, Jo Jingles, Junior Chess Club, Keep Fit, Kick Boxing, Men's Fellowship Lunch Group, Miniaturists, Mother Teresa (women's group), Allotments group, Brickhill Parish Council, Parish Planning, Pastoral Community Support Group, Bedfordshire Police Surgery, Pre school Children's Lunch Club, Qi Gong, Slimming World, Storybox, Storybox plus afterschool club, Study Group, Sugarcraft Guild, Bedford Borough Council Holiday Playschemes, Theatretrain, St Mark's Toddler Group, Top Marks, Weightwatchers, Whist Drive, Writers Circle

*Printed on sustainable paper*





## Introduction

# St Mark's Church Community Centre

### The Bad News!

We are in an urban area with desperate need for community facilities. This is a parish of 16,000 people and the population is expanding. 650 new homes are to be built, 500 of these next year.

We need to replace an ageing and disintegrating Portakabin with a planned new community centre. We have enough groups to fill it tomorrow, which is why we need it today.

*Printed on sustainable paper*



## Question 1

# Establishing the need for our project

### Who we have worked with in the consultation process

#### Management Committee

Community  
Forum

Audit of  
User Groups

Parish  
Council

Borough  
& County Council

Other  
Community  
Providers  
NBCVS

Diocese of  
St Albans

This project is actively supported by individuals and all representative groups from the local community. We have consulted extensively throughout every stage of this project for over two years.



## Question 1

### Establishing the need for our project

1. **Needs of existing Groups.** We already have 46 community groups and charities based at St Mark's. They are seeking additional resources. e.g. The Parish Council need youth facilities.
2. **Needs of new groups.** Community groups seek to use our facilities and we are unable to meet their needs. We are forced to turn community groups away and there is nowhere else for them to go.
3. **This is an expanding community with increasing needs.** County and Borough Councillors have stressed this in their letters of support. Our local community population is expanding, we want to expand our work in the community - and do it in a sustainable way.

*Printed on sustainable paper*





## Question 1

### Establishing the need for our project

**The following is a specific demonstration of how our recognised need received overwhelming community support through extensive consultation with the local community.**

1. Architects drawings were made in August 2003. Consultation with community identified need for subsequent alterations to the building plans.
2. Desirable outcomes could only be achieved if Borough Council made possible sale of green open space to St Mark's, to enable changes to building.
3. St Mark's received the support of the entire community, including, Parish council, Borough and County Councillors. As a result Bedford Borough Council agreed the transfer of land used as community playground to St Mark's Church Community Centre.

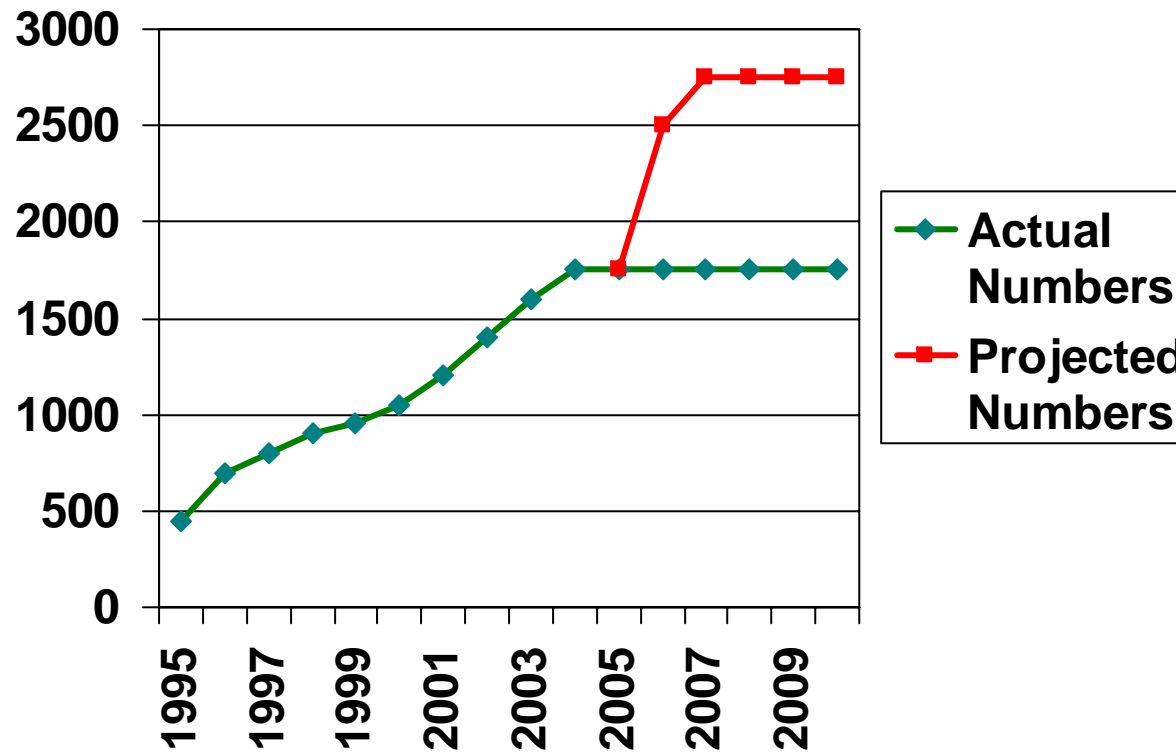
*Printed on sustainable paper*





## Question 1

### Establishing the need for our project



Actual numbers of weekly users and projected increase over time with new Community Centre

*Printed on sustainable paper*





## Question 1

### Establishing the need for our project

**These are some of the groups who will use our new Community Centre**

Youth Group – Organised by Brickhill Parish Council/Bedfordshire Police

Brickhill Parish Council

Internet training and community internet access

Women's breast cancer support group

Autism Bedfordshire

Heart patients support group

*Printed on sustainable paper*





## Question 2

### Value for money - our building

#### 1. Professional consultation

The project has been developed in consultation with architect Mr John Creasey who has now been selected by the Management Committee as best representing our objectives to take the project forward

#### 2. Several local builders have submitted quotations

Following informal tender, XXXXX

#### 3. Independent advice on sustainability and Clear Skies Grant

Approved contractors have submitted quotations for our investment in renewable energy, following advice from The National Energy Foundation

#### 4. VAT Liability

Consultation with HM Revenue and Customs indicates construction will be zero-rated for VAT

*Printed on sustainable paper*





## Question 2

### Value for money of - our planned use

#### **St Mark's have successfully developed the model of total community access**

1. All space is shared, allowing access to a large number of community groups
2. Building is in use for the greatest amount of time
3. Presence of existing facilities allows wider range of deployment choices within a flexible framework able to respond to growing community need

*Printed on sustainable paper*





## Question 3

# Environmentally friendly nature of project

### St Mark's commitment to the environment

1. Our existing Environmental and Sustainability Policy is driven by our commitment to reduce damage to the environment from our activities.
2. The new Community Centre will be subject to our ongoing environmental procedures and continual monitoring.
3. The provision of local community facilities contributes to a lowering of transport and associated energy waste. An example would be our Brickhill Police Partnership working in conjunction with the Parish Council to provide a local police station.

*Printed on sustainable paper*





## Question 3

# Environmentally friendly nature of project

### We have sought independent advice on sustainability

The National Energy Foundation have compiled a report with recommendations which will be followed in the building of the Centre and our operation of the project in subsequent years.



### Design and build

Our Management Team and architect will work with our local contractor to ensure the project has sustainable construction and energy efficiency throughout.

*Printed on sustainable paper*





## Question 3

### Environmentally friendly nature of project

1. Build minimises damage to surrounding environment. This is seen in such things as special measures to prevent root damage to trees.
2. The building will maximise the availability of natural light and have superb insulation to reduce overall energy use.
3. We will use energy efficient appliances and make provision of covered bicycle stands.
4. The building will be economic to run and will minimise waste and emissions. There will be low energy cost from using renewable sources of energy which produce lower emissions. Our design incorporates a wood boiler, solar water, photovoltaics and a wind turbine (*Turbine subject to separate planning application*).
5. Displaced soil will be used in the building of our new garden area. The existing Portakabin will be reallocated to another community use.

*Printed on sustainable paper*





## Question 4

### Innovative and special features

- 1. St Mark's is recognised nationally** as a role model by other community centres. If we were successful in obtaining an award from WREN, this would encourage others to take green issues seriously. Climate change can only be tackled through reduced emission of Carbon Dioxide. This scheme takes renewable energy and sustainability seriously and this will figure prominently in our publicity, were we considered for an award.
- 2. We are building to meet real demand** which currently cannot be met, across the widest range of community groups. Currently we have to turn people away. We want to meet these current needs, as well as those in our vision for the future.
- 3. This scheme is imaginative yet achievable.** St Mark's has a proven track record of optimising the use of grants for the community and a reputation for delivering our stated objectives. We can therefore guarantee success.

*Printed on sustainable paper*





## Question 4

### Innovative and special features

#### Added Value – Training opportunities

We will use our building project as an opportunity to provide work experience and employment opportunities for the learning disabled.



The Clubhouse project, funded by the European Social Fund (Bedfordshire County Council co-financing partner) - will provide employment for three people with learning disabilities on the building project.



*Printed on sustainable paper*





## Our costs

**Construction cost £ X**

### **Additional expenditure**

Interior furnishing £ XX

Relocation of Portakabin £X

External pathways £X

Engineers fees £ X

Professional and authority fees £X

Planting and provision of bicycle stands £X

**Total project cost £ XX**

*Printed on sustainable paper*





## The way forward

We have sought awards from grant making bodies for over two years and have been disappointed with the amount raised. It is only realistic to recognise that the Village Hall and Community Centre Challenge probably represents our only chance to realise our objectives.

### **If our project received an award of up to £ X**

We can realise all of our fundraising objectives and our project would be a flagship for WREN and our community. We would begin building in May 2006 and complete within 16 weeks.

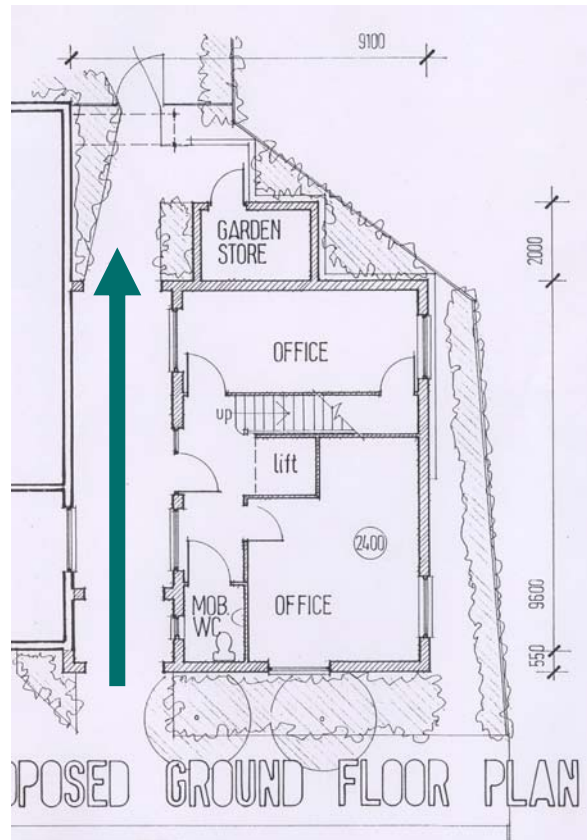
### **If our project received an award of up to £X**

We would need to make economies, but we would build. As an example, photovoltaics and the wind turbine would be added at a later date to save initial costs. We are prepared to finance any shortfall and have held discussions to enable building to begin in May 2006 and complete in 12 weeks. This would still be a project of which WREN and our community would be proud. It would continue to reflect our joint goals and objectives

*Printed on sustainable paper*

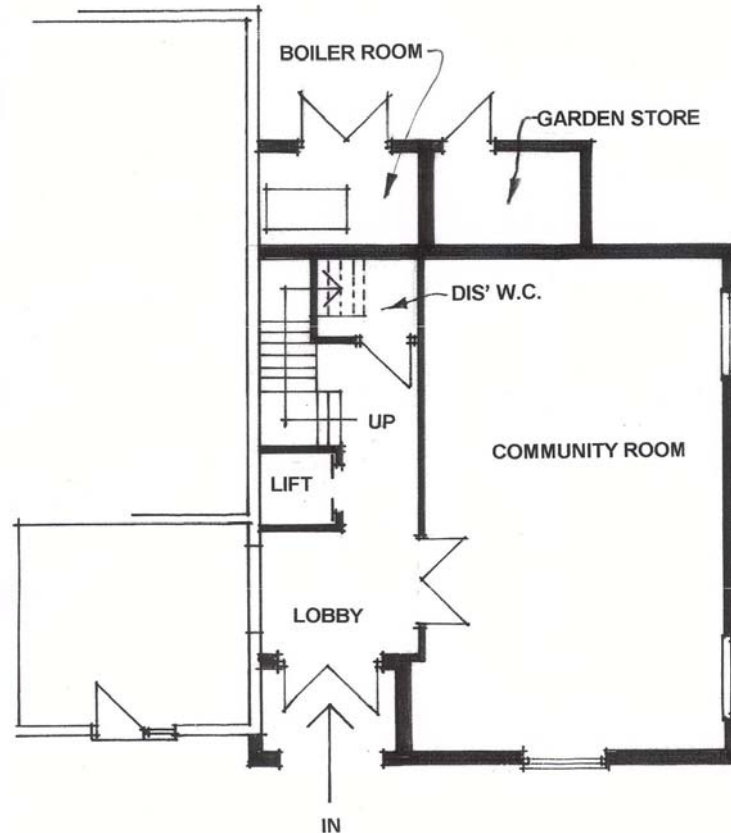


## Community Centre Architects Drawings



This drawing shows the original plan with entrance through building to rear of Centre. After consultation this was changed.

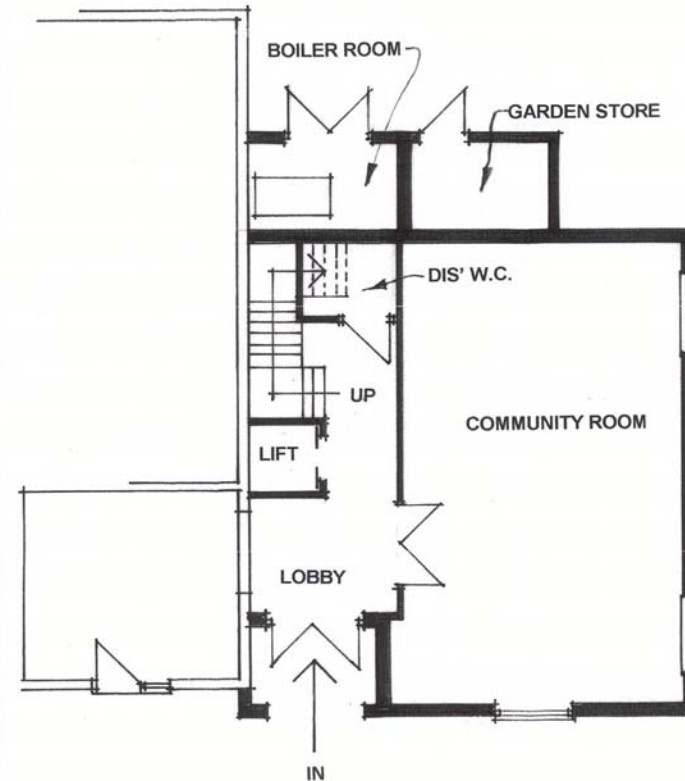
## Community Centre Architects Drawings



Drawing shows new plans with larger community room. The access has been incorporated into the new Centre. An enlarged boiler room for a wood boiler is also provided

*Printed on sustainable paper*

# Community Centre Architects Drawings



*Printed on sustainable paper*



## Community Centre Architects Drawings



Drawing shows  
front of the new  
community  
Centre

*Printed on sustainable paper*

## Community Centre Architects Drawings



Drawing shows  
cross section of  
Community Centre

*Printed on sustainable paper*



## Our Need

**St Mark's have been seeking funding from grant making bodies for this project for over two years. We have found grant making bodies stretched financially. We desperately need the grant from WREN to make our project, and the vision which we have for our community, happen.**

**Please help**

*Printed on sustainable paper*

